

FIRST FLOOR CHILTERN HOUSE, TRURO



CONCORDE
RECRUITMENT

01872 262828
crt@cornwall.ac.uk

WORK YOU
LOVE

WHERE YOU
WANT

WHEN YOU
WANT

JOIN US
TODAY

CONCORDE
RECRUITMENT

CONCORDE
RECRUITMENT

CONCORDE
RECRUITMENT

CONCORDE
RECRUITMENT

CONCORDE
RECRUITMENT

CONCORDE
RECRUITMENT

CONCORDE
RECRUITMENT

CONCORDE
RECRUITMENT
THE CORNWALL COLLEGE GROUP

SBC
PROPERTY

FIRST FLOOR CHILTERN HOUSE

CITY ROAD

TRURO, CORNWALL

TR1 2JL

- Centrally positioned offices in cathedral city of Truro
- First floor, large open plan and individual rooms
- Total net area circa 185.25 sq m (1994 sq ft)
- 4 allocated parking spaces included
- New lease available



RENT £22,500 PER ANNUM

LOCATION

Chiltern House is located in the heart of the City of Truro, the main administrative and social retail leisure centre of the County. Truro is Cornwall's principal commercial and retailing location, the preferred location for the majority of business and retail operators. The town has a population in the region of 20,000 persons which but with a catchment of circa 400,000 attracting visitors from across the county.

The property is situated in a central position within the city centre found on the corner of Calenick Street and City Road in close proximity to Anytime Fitness, British Heart Foundation, BT, Uneeka, Concorde Recruitment, ShelterBox and Cotton Mills.

DESCRIPTION

The premises comprise a suite of modern first floor offices, arranged in a mix of three large rooms to the front benefiting from movable internal partitions to create a room of up to 18m in length plus smaller managerial/meetings rooms. WC's are found to the rear. The offices are carpeted and well decorated with perimeter trunking and partial air conditioning.

The offices are accessed via a shared lobby front elevation.

4 allocated spaces are provided within a private car park to the rear of the property offers.

ACCOMMODATION (Areas are approximate)

First Floor

Reception	:	5.00m x 3.65m
Office 1	:	8.89m x 6.45m
Office 2	:	4.35m x 6.50m
Office 3	:	6.25m x 4.33m
Office 4	:	5.20m x 4.31m
Office 5	:	3.34m x 4.56m

WC's

*Offices 1,2 and 3 are interlinked with movable partitions

Net Internal Area 185.25 sq m (1,994 sq ft)

RENT

£22,500 per annum + VAT.

LEASE TERMS

The property is offered by way of a new 5 year lease, subject to service charge.

BUSINESS RATES

Current rateable value (2026 List) £19,250

The tenants is responsible for the business rates. Prospective tenants should make their own enquiries with Cornwall Council to confirm rates payable and any small business rate relief or discounts available.

EPC

On the Rocks has an EPC Rating of C

Certificate number : 8980-1167-2540-8523-8139

Expiry Date : 18 June 2034

VAT

We understand the property is elected for VAT.

VIEWING/FURTHER INFORMATION

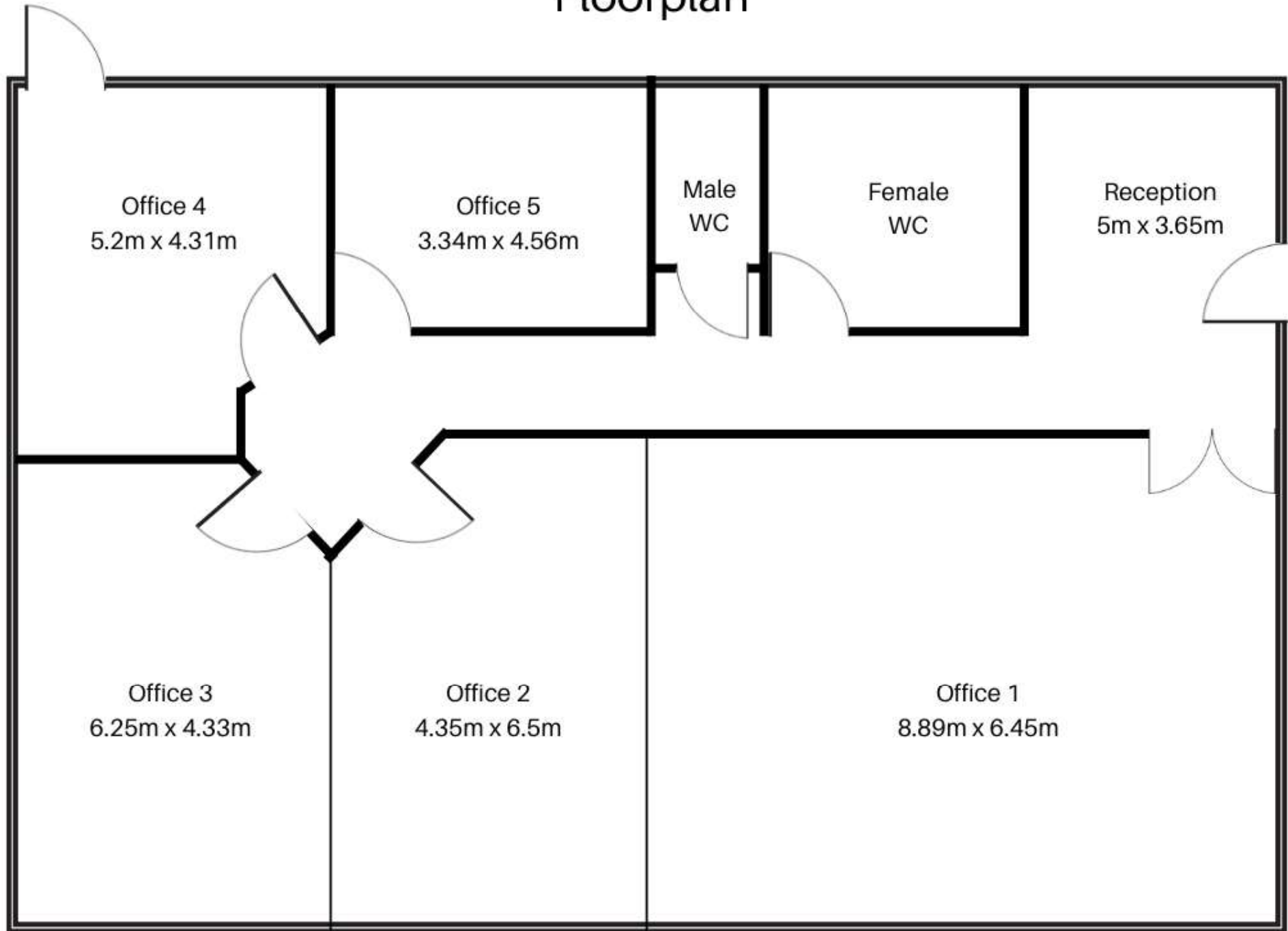
Viewing strictly by appointment with SBC Property the sole letting agents.

SBC Property
Daniell House
Falmouth Road
Truro
Cornwall TR1 2HX

FAO : Barney Peters
TEL : 07738321136
EMAIL: Barneyesbcproperty.com

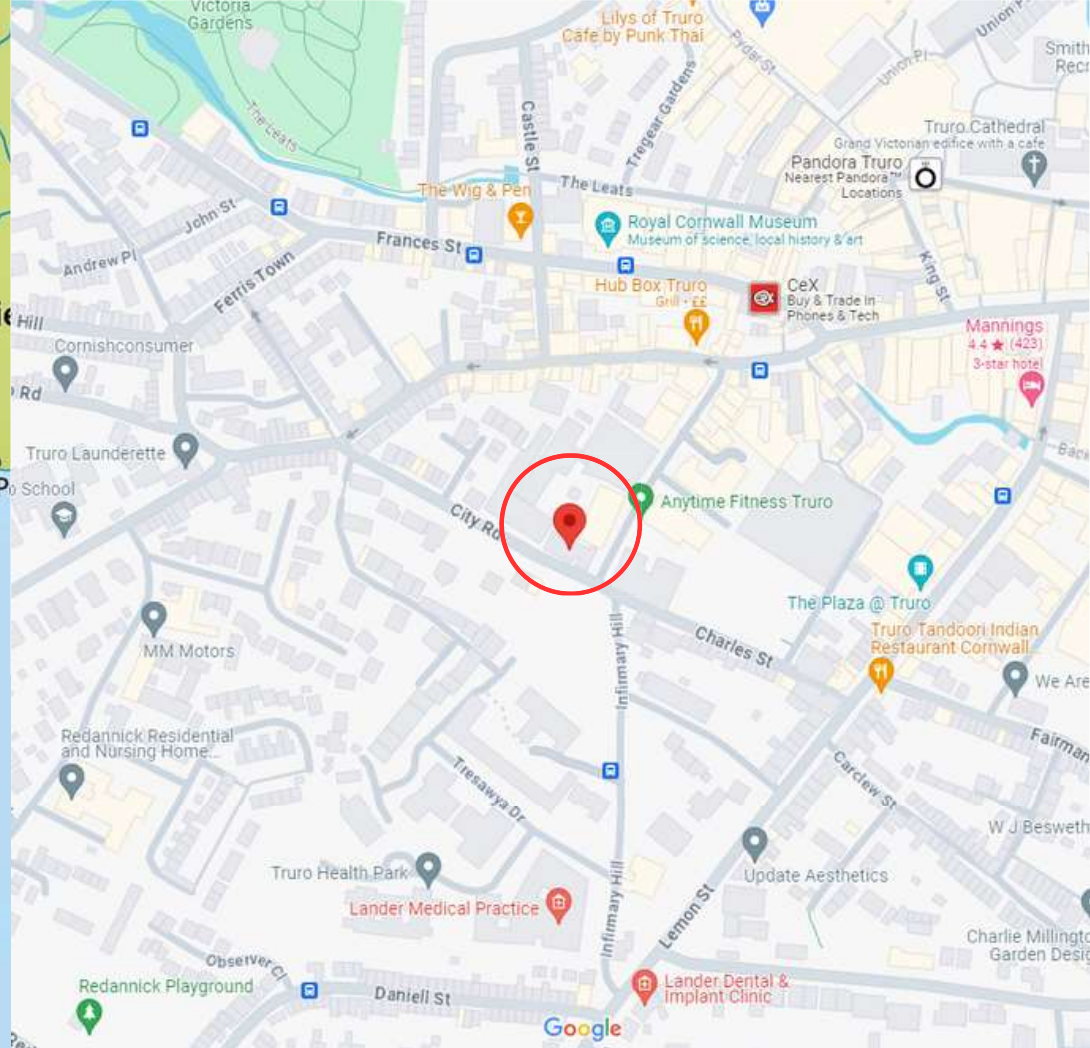


Floorplan



(Areas are approximate)





CHARTERED SURVEYORS

COMMERCIAL, LICENSED & LEISURE PROPERTY CONSULTANTS

DANIELL HOUSE
FALMOUTH ROAD
TRURO TR1 2HX

T: 01872 **277397**

T: 07738 **321136**

E: Barney@sbcproperty.com

SBC Property is the trading name of Scott Burrige Commercial LLP for themselves and for the vendors of this property whose agents they are give notice that: (1) These particulars do not constitute any part of an offer or a contract. (2) All statements contained in these particulars as to this property are made without responsibility on the part of Scott Burrige Commercial LLP, or the vendor. (3) None of the statements contained in these particulars as to this property are to be relied on as statements or representations of fact. (4) Any intending purchaser must satisfy himself by inspection or otherwise as to the correctness of each of the statements contained in these particulars. (5) The vendor does not make or give Scott Burrige Commercial LLP nor any person in their employment any authority to make or give any representation or warranty whatever in relation to this property.

The sale of any going concern business is confidential therefore we would ask that you do not make any direct approaches to vendors, their staff or customers, and arrange all viewing appointments through our office. You are recommended to contact us before visiting the property even for an information viewing, we can then confirm whether or not it is still available. It is emphasised that in these Particulars of Sale items of furniture, fixtures, fittings and equipment are mentioned for descriptive purposes only and do not necessarily form part of the Trade Inventory as referred to above.